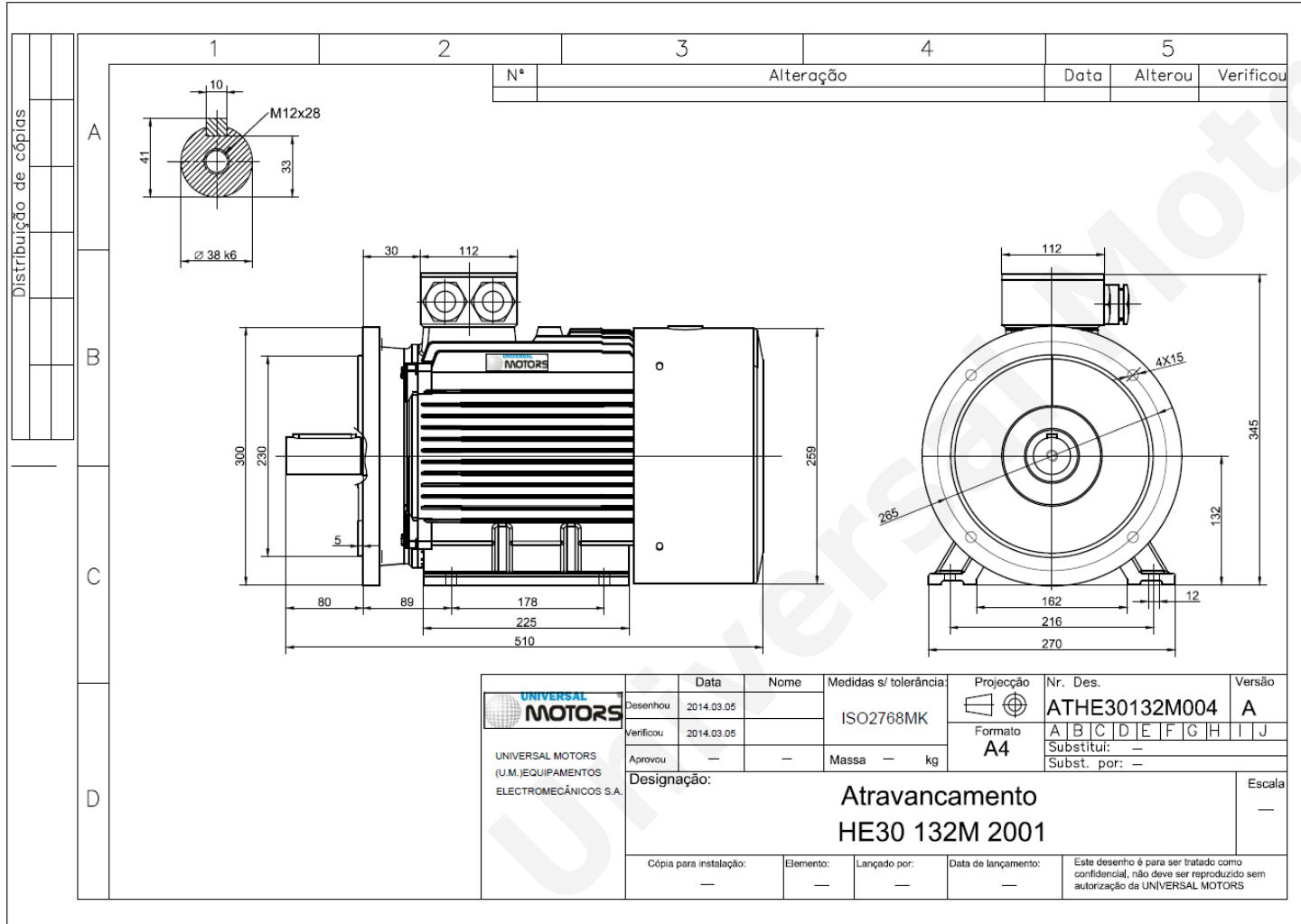




TECHNICAL DATA

Three Phase Electric Motors - Cast Iron Frame
 HE30 132 M1 4 IE2
 7.5 kW / 10 Cv
 1450 RPM



Motor type: **HE30 132 M1 4 IE2**
 Output: **7.5 kW / 10 Cv**
 Speed (min⁻¹): **1450 RPM**
 Frequency: **50 Hz**
 Voltage: **400 V**
 Current: **14.7 A**
 Power factor (Cos Ø): **0.83**
 Poles: **4**
 Insulation class: **F**
 Temperature rise Class: **B**
 Efficiency 50%: **88.5 %**
 Efficiency 75%: **89.4 %**
 Efficiency 100%: **88.7 %**
 Torque: **49 N.m**
 Tstarting/Tnominal: **2.2**
 Istarting/Inominal: **7.8**
 Tmaximum/Tnominal: **2.3**
 Noise: **60 Db(A)**
 Weight: **128 Kg**
 Bearing DE: **6308 2Z C3**
 Bearing NDE: **6308 2Z C3**

Regime - S1

Altitude - 1000m

Environment Temperature - 40°C

CONTACTS:

UNIVERSAL MOTORS Tel: +351 252 299 080
 Rua de São Brás,745 Fax: +351 252 299 089
 4480-782 VILA DO CONDE Mail: geral@universalmotors.pt

* References applied only in the UK